

Specifications

Model	MDX-310	MDX-210	MDX-110
Maximum Speed	15,000rpm		
Maximum RCF	21,890G	20,380G	20,380G
Maximum Capacity	50ml × 4	30ml × 6	2ml × 24
Speed Control System	Microprocessor feedback control		
Drive Motor	Induction motor		
Data Entry	Jog Dial with ENTER key and Touchscreen Numeric keypad available		
Temperature Setting Range	From -9°C to +35°C (1°C increment)		
Speed Setting Range	300 to 15,000rpm (100rpm increments)		
RCF Setting Range	10 to Maximum RCF (Less than 300G : 10G increments, Over 300G : 100G increments)		
Time Setting Range	10sec ~ 99min50sec (in 10sec increments) or (Free) for a continuous run		
Safety Devices	Imbalance detector	Over-speed detector	
	Lid interlock	Motor over-current detector	
	Over-current circuit breaker	Lid open / close detector	
	Overheat / Overcool detector	Rotor identification system	
Convenient Functions	Last run memory	Power saving (ECO) mode	
	Soft Brake function	PRE-TEMP function	
	FLASH (Short spin) function	Annual inspection indicator	
	Memory function (six sets of operating parameters)		
	Heat exchanger overheat detector	Calendar date & time display	
Refrigerant	HFC R134a (260g)		
Power Requirements	1-Phase AC120V 60Hz 15A 1-Phase AC220-240V 50/60Hz 10A		
Dimensions	341 W × 491 D × 823 H (Lid in open position : 1138 H, table height : 787 H)		
Net Weight	62 kg		
Accessories Included	• Operator's manual x 1 copy • Drain plug x 1 piece	• Rotor fixing knob x 1 piece • Power cord x 1 piece	• Caster holder x 2 pieces • Hexagon wrench x 1 piece

* Specifications and design are subject to change for improvement without prior notice.
Ask for the latest specifications prior to your order and procurement.

Features for MDX-310	Features for MDX series	
-Spin-able up to 2ml x 72 tubes -50ml /15ml x 4 conical tubes -14,000rpm with 96 well PCR plate x 2	- Max. speed 15,000rpm - Rack-in Rotor system - Touchscreen with color LED display - Jog Dial with enter key - Numeric keypad - Flash (momentary) spins	- Memory function - PRE-TEMP function - Annual voluntary inspection reminder - Dusting indicator - ECO mode - Date format selectable

Sales Office:

TOMY DIGITAL BIOLOGY CO., LTD.
3-14-17 Tagara, Nerima-ku, Tokyo 179-0073, Japan
e-mail: info@digital-biology.co.jp
URL: <http://www.digital-biology.co.jp/manufactured/>
phone: +81-3-5971-8160 fax: +81-3-3970-6036

TOMY SEIKO CO., LTD.

Manufacturer:

TOMY KOGYO CO., LTD.
3-14-17 Tagara, Nerima-ku, Tokyo 179-0073, Japan

All TOMY products have a limited one-year warranty.
Specifications are subject to change according to product advancement.
Tomy and Digital Biology is registered trademark of Tomy Seiko Co., Ltd. and Tomy Digital Biology Co., Ltd. Copyright 2019, Tomy Seiko and its subsidiaries. Printed in Japan.

3K12019①R

MDX

MDX-310
MDX-210
MDX-110

HIGH SPEED REFRIGERATED CENTRIFUGES





Rack-in-Rotor System

STOPPING

RUNNING

OUT

IN





HIGH SPEED REFRIGERATED CENTRIFUGES

MDX series

MDX-310

Flagship Model



MDX-210



MDX-110



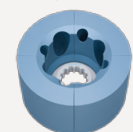
Rack-in-Rotor System



Rack for CA-300

50or14ml × 4 tubes

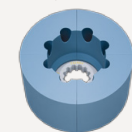
15,000rpm
20,130G



AR501-04 *1

15ml × 8 tubes

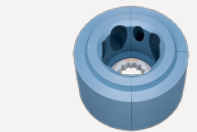
Conical
15,000rpm
20,380G



AR150-08

50or15ml × 4 tubes

Conical
15,000rpm
20,380G



AR510-04 *1

96 well PCR plate × 2

14,000rpm
10,740G~15,340G

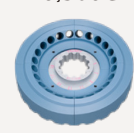


PCR96-02 *2 Adapter A96-01PC

Rack for CA-300/200/100

2ml × 24 tubes

15,000rpm
20,380G



AR015-24

0.5ml × 24 tubes

15,000rpm
19,880G



AR005-24

PCR 8-wells tube x 8 lines

15,000rpm
Outer:18,120G Inner:16,350G



AR002-64

Rotor CA-300 for MDX-310

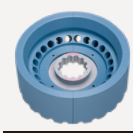
Rotor CA-200 for MDX-210

Rotor CA-100 for MDX-110

Rack for CA-300/200

2ml × 24 tubes

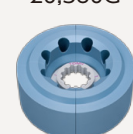
Spin column
15,000rpm
20,380G



AR015-SC24

14ml × 8 tubes

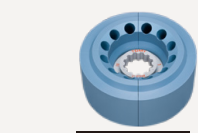
15,000rpm
20,380G



AR141-08

5ml × 12 tubes

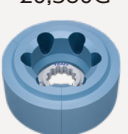
Conical
15,000rpm
20,130G



AR050-12 *3

30ml × 6 tubes

15,000rpm
20,380G



AR300-06

*1 : Impossible to spin 50ml tubes and 15 ml tubes at the same time.

*2 : Adapter A96-01PC is required.

*3 : Contact TOMY for applicable tube details.

Fixed Angle Rotors for MDX-310 only

2ml×18 tubes

15,000rpm
17,860G



CA-1

2ml×24 tubes

13,500rpm
17,730G



CA-10

2ml×18 tubes

15,000rpm
0.5ml×12 tubes
/ 0.2 ml×12 tubes
19,120G(2ml)



CA-15

2ml×24 tubes

15,000rpm
21,130G



CA-5

2ml×36 tubes

15,000rpm
21,130G
(Outer line)



CA-6

*3
5ml×12 tubes

15,000rpm
20,630G



CA-12

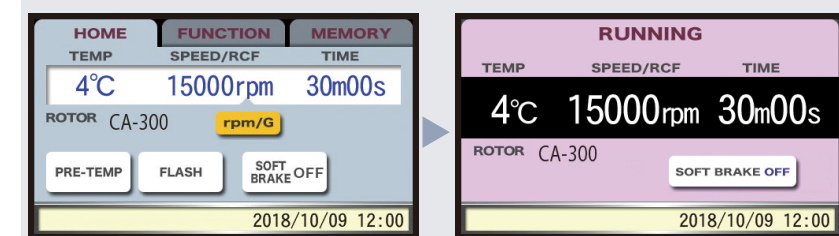
Conical
50ml or 15ml
4 tubes

15,000rpm
21,890G

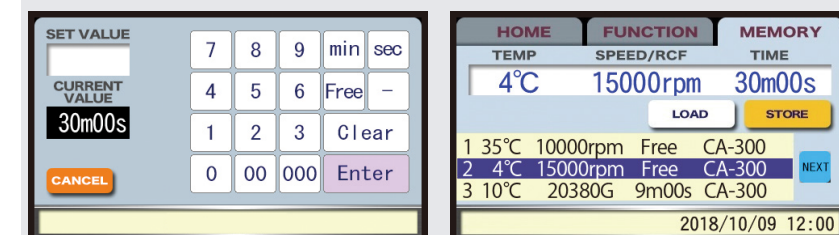


CA-17

Intuitive Operation Panel with Touchscreen



● Operation panel changes during the operation for easy monitoring.



● Numeric keypad available

● 6 memory functions for quick and easy settings

User Friendly and Safety Features

- Simplified data entry with Jog Dial
- Flash (momentary) spins
- Annual voluntary inspection reminder
- Dusting indicator
- Advanced ECO-MODE

Comparison of power consumption between previous model and MDX-310

